

Online Chain of Custody & Sample Submission

For sample generators

Increase efficiency

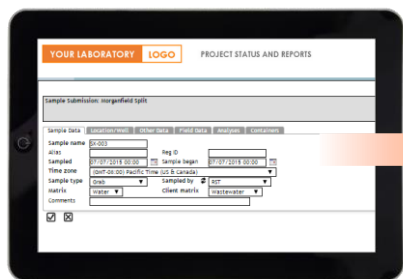
EnviroChain® EA automates the submission of samples to the laboratory and eliminates the cost and manual errors common with a paper-based system. From the field to the laboratory, replace thousands of paper CoCs with one accurate, efficient, and reliable online service.

In the same way that online banking is replacing check writing, and email is replacing paper mail, online chain of custody and sample submission is providing you with a streamlined and cost effective way to improve and accelerate the flow of data and samples—getting your project done quicker and more accurately.

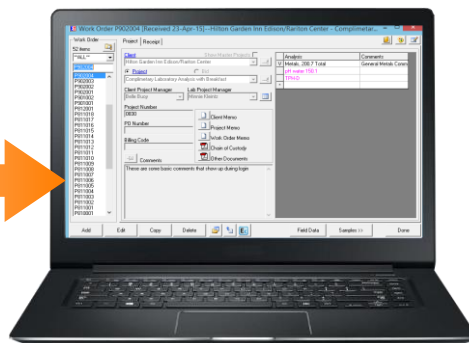
Ship samples off to the lab from the collection point and send sample data directly into the laboratory information management system. The data is available for download before the samples even arrive. This integration and direct data download eliminates transcription errors from manual data entry and creates a more efficient flow of data.

Key features

- Enter data through any web-enabled smartphone, tablet, or computer with an Internet connection
- Integration with Element ClientConnect web portal provides convenient access to view transactions and results
- Have samples scheduled in Element LIMS or complete the whole process in the field
- Pre-populated templates
- Pre-entered analysis methods
- Use previous sample as template for new one
- Field data capture
- Record GIS coordinates
- Data file submission
- Printable PDF for cooler



Field – EnviroChain EA



Laboratory – Element LIMS

Intuitive step-by-step process for creating a new chain of custody and sample submission

1. Log in

Log in to the secure laboratory website and select the appropriate project.

2. Sample information

Enter sample information or use the copy feature and use pre-populated templates to save time and eliminate data entry.

3. Location information

Enter location/well information such as depth, latitude, longitude, elevation, casing height casing type, casing diameter, and gradient. This information can also be entered into a template.

4. Field data

And field data such as pH, turbidity, flow, residual chlorine, conductivity, dissolved oxygen, total chlorine, and temperature.

5. Analysis

Review the pre-assigned analysis and update where appropriate.

6. Containers

Verify that the correct containers have been selected

7. Submit samples

Submit the samples and create an online CoC (in PDF form that can be printed if necessary). Print out a Custody Seal and affix to the shipping container. Download at: <https://promium.com/main/lims-envirochainea>

Contact the laboratory to learn more.

